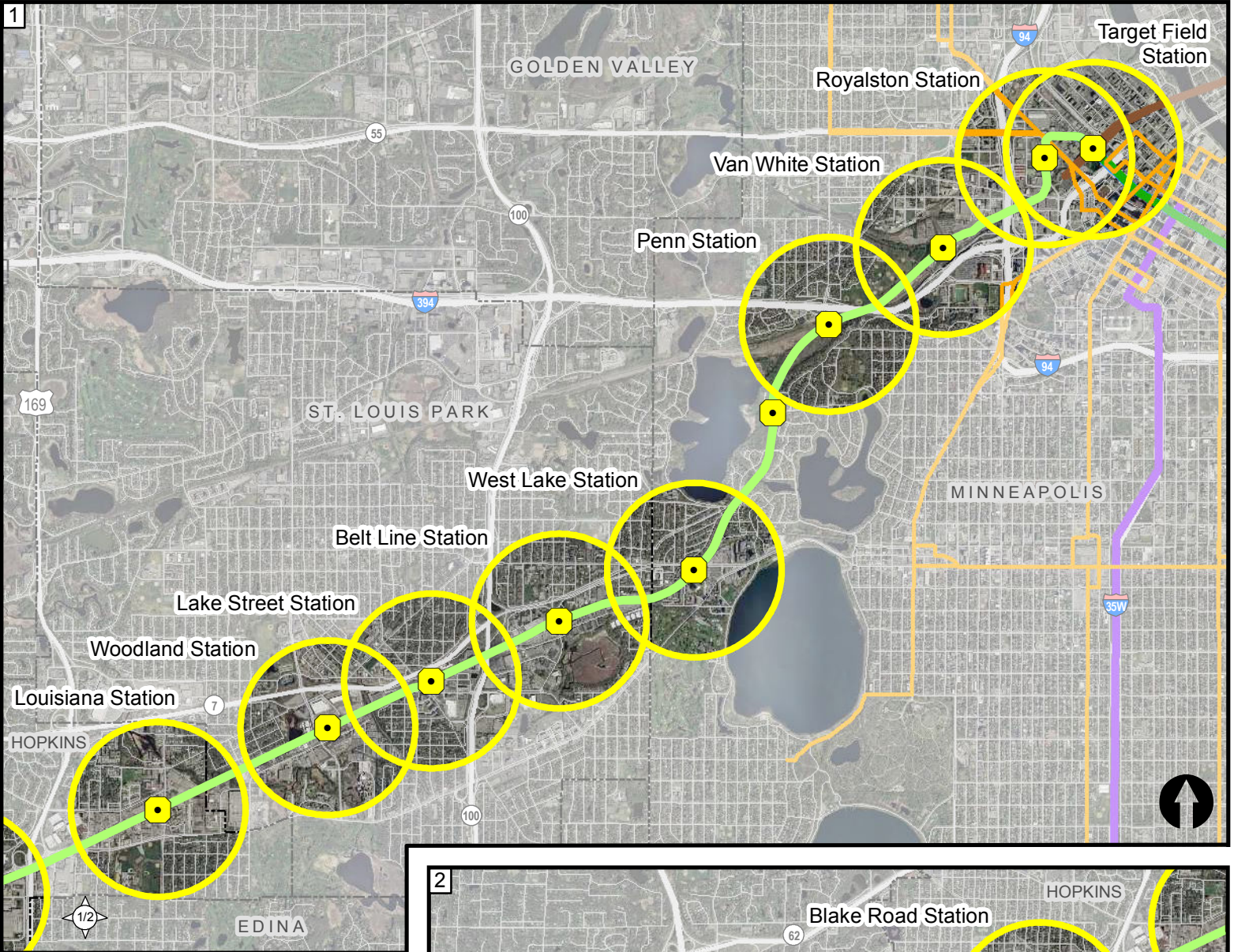


Transit Improvement Areas (TIAs) along Southwest LRT Corridor



- TIA (Transit Improvement Area)
- TIA Eligible
- Planned Transit Station
- Hiawatha LRT Alignment
- Northstar Commuter Rail
- Cedar Avenue BRT Alignment
- I-35W BRT Alignment
- Central Corridor LRT Alignment
- Southwest LRT Planned Alignment
- High Frequency Bus Route

